

DRAWING NUMBER
53/88

GLENEAGLES PLAT SEVEN A

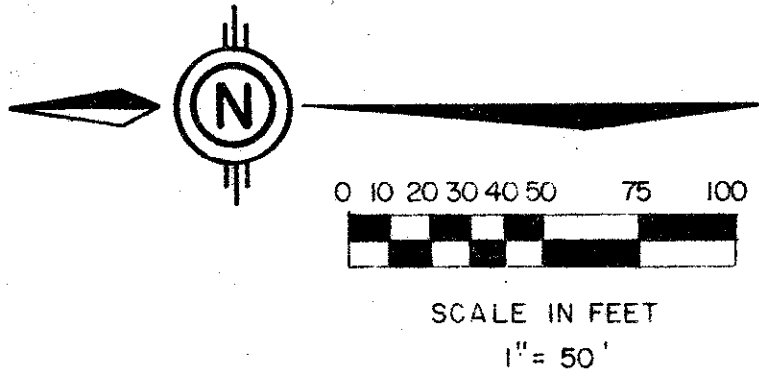
(A PORTION OF PARCEL "D" OF GLENEAGLES, A P.U.D.)

SITUATE IN SECTION 21, TOWNSHIP 46 SOUTH, RANGE 42 EAST,
PALM BEACH COUNTY, FLORIDA, BEING A REPLAT OF TRACT "F"
OF GLENEAGLES PLAT SEVEN, (P.B. 52, PGS. 61 - 64).

SHEET 2 OF 2

88

STATE OF FLORIDA
COUNTY OF PALM BEACH
THIS PLAT WAS FILED FOR
RECORD _____
THIS _____ DAY OF _____
AD, 1986 AND DULY RECORDED
IN PLAT BOOK _____ ON PAGES
_____ AND _____
JOHN B. DUNKLE, CLERK
BY: _____, D.C.

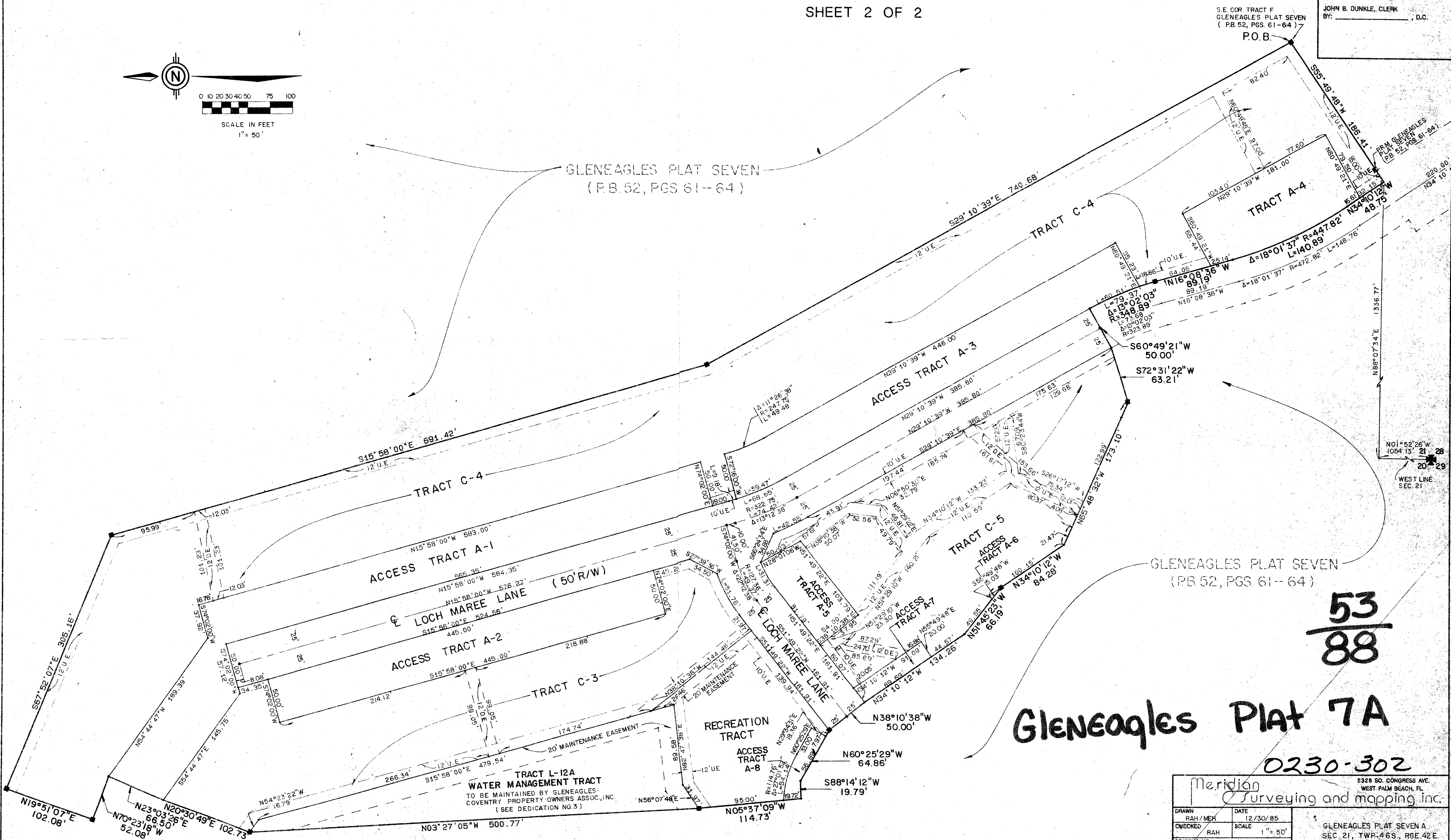


DRAWING NUMBER

DRAWING NUMBER

DRAWING NUMBER

GLENEAGLES PLAT SEVEN
(P.B. 52, PGS 61-64)



GLENEAGLES PLAT SEVEN
(PB 52, PGS 61-64)

53/88

Gleneagles Plat 7A

0230-302

Meridian		2328 SO. CONGRESS AVE. WEST PALM BEACH, FL	
Surveying and mapping inc.			
DRAWN RAH/MEK	DATE 12/30/85		
CHECKED RAH	SCALE 1" = 50'		
DRAWING NO. 85-018PL7A	GLENEAGLES PLAT SEVEN A SEC. 21, TWP. 46S., RGE. 42E.		